



Data Source: Office of Information Resources Management (OIRM), Bureau of Geographic Information Systems (BGIS), NJ Department of Transportation New Jersey Roads (2017), New Jersey Department of Environmental Protection (NJDEP), NJDEP Wetlands of Bergen County, New Jersey 1986 (1999), Historic Fill for New Jersey (2009), NJDEP Site Remediation Program (SRP), Division of Remediation Support (DRS), Information Support Element (ISE), Bureau of Information Services and Program Support (BISPS), NJDEP Known Contaminated Site List for New Jersey (Non-Homeowner) Edition 201202 (2012), NJDEP Natural and Historic Resources (NHR), Historic Preservation Office (HPO), NJDEP Historic Districts of New Jersey (Edition 2011) and NJDEP Historic Properties of New Jersey Edition 2011, NJDEP Water Monitoring and Standards (WMS), Bureau of Freshwater and Biological Monitoring (BFBM), NJDEP Surface Water Quality Standards of New Jersey (Version 201012) (2012), NJDEP Division of Fish and Wildlife (DPW), Endangered Nongame Species Program (ENSP), NJDEP Species Based Habitat, Piedmont Region (Version 3.3, 20170509) (2012).

Base Layer: NJ Office of Information Technology, Office of Geographic Information Systems, NJ 2015 High Resolution Orthophotography, NAD83 (2011) NJ State Plane Feet, MrSID Tiles

Legend

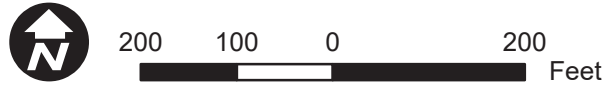
- Known Contaminated Sites
- Sensitive Receptors
- Stream
- Project Area
- 300' Study Area
- Municipal Boundary
- Open Space
- Historic Property
- Tidelands Claims
- Historic Fill
- 1% Annual Chance Floodplain
- National Wetlands Inventory
- Threatened and Endangered Species Habitat

Known Contaminated Sites

- Fotar Inc.
- Signs of Safety
- J Fletcher Creamer Brothers
- Anchorage Cove Corp
- Along the Hackensack River
- Johnson Park
- R A Hamilton Corp
- Spotless Car Wash
- Olympian Energy of NJ Inc.
- In Hackensack River
- Tide Gate
- Area of Anderson St and River St
- 836 Cedar Lane
- 824 Cedar Lane
- 801 Cedar Lane
- 790 Cedar Lane
- Valley Physician Services NJ
- Morelite Products

Sensitive Receptors

- Johnson Park
- Teaneck Swim Club Inc.
- 810-824 Cedar Lane
- BF Dental Professionals
- 753-819 Cedar Lane



**North Jersey
Transportation Planning Authority**

Environmental Constraints Map

FY 2018 Morris and Bergen Counties
Local Concept Development

Township of Teaneck & City of Hackensack
Bergen County, NJ

